

**andrewparrini**  
Corporate Clothing

*easy care  
collection*



## | easycare collection

Tailored from the finest Microfibre Polyester this is the ultimate in sophisticated Easycare Corporate Tailoring.

This 8 piece collection offers something for all female (note we consider this fabric unsuitable for men's trousers) wearers from highly fashionable styles to more classic ones. Choose from 3 jacket styles, 3 trouser styles and 2 skirts; all available in 3 colours.

Easycare means just that: Easy care! Just wash your clothes at 40° put them on a hanger to dry and they are ready to wear in 2 hours. Wearers love the convenience of this lightweight ultra Easycare collection.

Fabric:	100% Polyester. (Superfine Microfibre Polyester; A technical fabric that shouldn't be confused with standard gauge Polyesters)
Weight:	280 Grams per linear metre
Performance:	Grade 4/5 Piling (no piling equals a grade 5) Martindale Abrasion test taken to 50,000 rubs with no threads breaking
Shrinkage:	Negligible
Aftercare:	Machine Washable or Dry Clean

The Easycare collection has been popular for more than 4 years. Thousands of wearers across Europe are successfully wearing the Easycare collection many are on their 2nd or 3rd issue.

Ideal for any office, travel or hotel environment where style with the convenience of Easycare is required.

### Washcare Instructions

#### Washing



Ensure that the suit is washed separately & machine wash as wool. Garments will need removing immediately from the machine when the cycle has ended.

#### Drying



Place the jacket back on the hanger, shake gently and re-shape by gently straightening seams. Fold the trousers to the front creases and hang over the bar on garment hanger. Allow both garments to dry naturally & keep away from direct heat. Do not tumble dry.

#### Finishing



If required, press the garments using a cool iron over a damp cloth.



- Wash at 40°
- Put on a hanger to dry
- Ready to wear in 2 hours

Altino Jacket, 2 button short jacket.  
Barletta Trouser, parallel leg trouser.



Altino Jacket, 2 button short jacket. Machine washable.  
Barletta Trouser, parallel leg trouser. Machine washable.



Borello Jacket, 3 button short jacket. Machine washable.  
Barletta Trouser, parallel leg trouser. Machine washable.



Diano Trousers,  
machine washable.



Barletta Trouser, parallel leg trouser, front fastening,  
waistband pocket. Machine washable.



Alessandria Trousers, flared leg trouser,  
front fastening, machine washable.



**Trento Skirt**, straight skirt. Machine washable.



**Latina Skirt**, longline skirt, side vents, fully lined. Machine washable.



The Easycare collection has been popular for more than 4 years. Thousands of wearers across Europe are successfully wearing the Easycare collection many are on their 2nd or 3rd issue.

Ideal for any office, travel or hotel environment where style with the convenience of Easycare is required.



### Easycare collection

Tailored from the finest Microfibre Polyester this is the ultimate in sophisticated Easycare Corporate Tailoring.

This 8 piece collection offers something for all female (note we consider this fabric unsuitable for men's trousers) wearers from highly fashionable styles to more classic styles. Choose from 3 jackets, 3 trousers and 2 skirts; all available in 3 colours.

Easy care means just that: Easy care! Just wash your clothes at 40° put them on a hanger to dry and they are ready to wear in 2 hours. Wearers love the convenience of this lightweight ultra Easycare collection.

- Fabric: 100% Polyester. (Superfine Microfibre Polyester; A technical fabric that shouldn't be confused with standard gauge Polyesters)
- Weight: 280 Grams per linear metre
- Performance: Grade 4/5 Piling (no piling equals a grade 5) Martindale Abrasion test taken to 50,000 rubs with no threads breaking
- Shrinkage: Negligible
- Aftercare: Machine Washable or Dry Clean

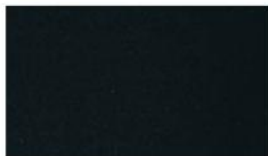
The Easycare collection has been popular for more than 4 years. Thousands of wearers across Europe are successfully wearing the Easycare collection many are on their 2nd or 3rd issue.

Ideal for any office, travel or hotel environment where style with the convenience of Easycare is required.

Fabric: 100% Polyester (superfine Microfibre)



A - navy



B - black



D - navy pinstripe



### ALTINO Jacket (*Al tin o*)

#### Single Breasted Jacket

2 Button front, single breast lapel with hand edged stitching, 2 flap pockets, 1 inside pocket, machine washable, no vent.

- 2202A Navy
- 2202B Black
- 2202D Navy pinstripe



### BORELLO Jacket (*Bo rel lo*)

3 Button front, single breast lapel with hand edge stitching, 2 flap pockets, machine washable.

- 2203A Navy
- 2203B Black
- 2203D Navy pinstripe



### CALABRIA Jacket (*Ca lab ria*)

#### Single Breasted Jacket

3 button front, 2 flap pockets, 1 inside pocket, fully tailored, machine washable.

- 2204A Navy
- 2204B Black
- 2204D Navy pinstripe



### ALESSANDRIA Trousers *(Ales san dria)*

Plain Front Flared Leg Trousers  
Fly front, 2 bilton extension, fob pocket,  
100% Polyester washable.

2193A Navy  
2193B Black  
2193D Navy pinstripe



### BARLETTA Trousers *(Bar let ah)*

Plain Front Parallel Leg Trousers  
Fly front fastening, belt loops, fob pocket,  
100% Polyester washable.

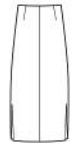
2173A Navy  
2173B Black  
2173D Navy pinstripe



### DIANO Trousers *(Di an oh)*

Flat Front Trousers  
100% Polyester washable.

2205A Navy  
2205B Black  
2205D Navy pinstripe



### LATINA Skirt *(La teen ah)*

Longline Skirt  
Side vents, fully lined,  
100% Polyester washable.

2087A Navy  
2087B Black  
2087D Navy pinstripe



### TRENTO Skirt *(Trent oh)*

Straight Skirt  
100% Polyester washable.

2086A Navy  
2086B Black  
2086D Navy pinstripe



- Wash at 40°
- Put on a hanger to dry
- Ready to wear in 2 hours

## easycare collection Size range available

### Wardrobes - Ladies Wear

#### Jackets: Calabria

6 - 16 petite  
6 - 24 regular  
10 - 24 long

#### Jackets: Altino & Borello

6 - 16 petite  
6 - 24 regular  
10 - 18 long

#### Trousers

6 - 24  
in leg lengths 27", 29", 31", 33" & 36" unfinished

#### Skirts

6 - 24  
in lengths 19", 22" & 25"

#### Longline Skirts

6 - 24  
in lengths 34" & 36"

### Washcare Instructions

#### Washing



Ensure that the suit is washed separately & machine wash as wool  
Garments will need removing immediately from the machine when  
the cycle has ended.

#### Drying



Place the jacket back on the hanger, shake gently and re-shape by  
gently straightening seams. Fold the trousers to the front creases  
and hang over the bar on garment hanger. Allow both garments to  
dry naturally & keep away from direct heat. Do not tumble dry.

#### Finishing



If required, press the garments using a cool iron over a damp cloth.



Andrew Parrini  
Carlisle  
Cumbria  
UK

(t): 01228 599700

(m): 07818 411011

Emai: [info@andrew-parrini.com](mailto:info@andrew-parrini.com)

[www.andrew-parrini.com](http://www.andrew-parrini.com)

**andrewparrini**  
Corporate Clothing